

DKT200-1/2/2A/4 Dry Bath Incubator

Dry Bath Incubator Series

Introduction

Dry Bath Incubator with high precision of temperature control. It is good for sample preparation parallelism. And it is used as an alternative to the traditional water bath devices. It is widely used in the cultivation, preservation and reaction of various samples. Its applications of industry include pharmaceutical, chemical, food safety, environment, quality inspection, etc.

Feature

1. Fast heating speed, uniform heating, accurate temperature control, high stability, low energy consumption and no noise.
2. Built-in temperature deviation calibration function, automatic fault detection and buzzer alarm function.
3. Built in over-temperature protection device, safe and reliable, enhance the service life of the machine.
4. Product designed compact and tight, occupied little space, free and easy.
5. Continuous operation is optional. Various blocks for convenient replacement, easy for cleaning and disinfection.
6. DKT200-2A can achieve independent heating and incubating, unique two for one design, meet more lab requirements.



DKT200-1

DKT200-2

DKT200-4

DKT200-2A

Parameter

Model	DKT200-1	DKT200-2	DKT200-2A	DKT200-4
Temp.Control Range	R.T.+5°C~150°C	R.T.+5°C~150°C	R.T.+5°C~150°C	R.T.+5°C~120°C
Temp.Setting Range	5°C~150°C	5°C~150°C	5°C~150°C	5°C~120°C
Time Range	1min~99h59min	1min~99h59min	1min~99h59min	1min~99h59min
Temp.Stability @40~100°C	±0.5°C	±0.5°C	±0.5°C	±0.5°C
Temp.Stability @ > 100°C	±1°C	±1°C	±1°C	±1°C
Block Temp.Uniformity@40°C	±0.3°C	±0.3°C	±0.3°C	±0.3°C
Block Temp.Uniformity@ > 100°C	±0.5°C	±0.5°C	±0.5°C	±0.5°C
Temp.Display Accuracy	0.1°C	0.1°C	0.1°C	0.1°C
Heating Speed	≤30min(20°C to 150°C)	≤30min(20°C to 150°C)	≤30min(20°C to 150°C)	≤30min(20°C to 120°C)
Sample Capacity	1 standard block	2 standard block	2 block individually control	4 standard blocks
Voltage	AC 220V/AC 110V,50/60Hz	AC 220V/AC 110V,50/60Hz	AC 220V/AC 110V,50/60Hz	AC 220V/AC 110V,50/60Hz
Power	200W	400W	400W	600W
Fuse	250V,2A/3A,Φ5x20	250V,3A/6A,Φ5x20	250V,3A/6A,Φ5x20	250V,5A/10A,Φ5x20
Dimension	W.200 x D.230 x H.95mm	W.220 x D.260 x H.95mm	W.290 x D.260 x H.95mm	W.220 x D.360 x H.95mm
Net Weight	2.6kgs	3.3kgs	3.3kgs	4.7kgs

Accessories



DT01



DT02



DT03



DT04



DT05



DT06



DT07



DT08



DT09



DT10



DT11



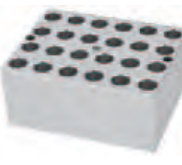
DT12



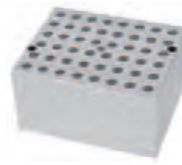
DT13



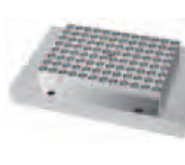
DT14



DT15



DT16



DT17



DT18

Notice:

DT17/DT18 is unavailable for DKT200-1 and DKT200-2A.

Accessories Parameter

Cat#	Spec	Dia. of hole	Hole bottom shape	Block dimension
DT01	6 mm x 42	6.5 mm	Round bottom	95.5 x 76.5 x 50 mm
DT02	7 mm x 42	7.5 mm	Round bottom	95.5 x 76.5 x 50 mm
DT03	10 mm x 20	10.5 mm	Round bottom	95.5 x 76.5 x 50 mm
DT04	12 mm x 20	12.5 mm	Round bottom	95.5 x 76.5 x 50 mm
DT05	13 mm x 20	13.5 mm	Round bottom	95.5 x 76.5 x 50 mm
DT06	15 mm x 12(7ml Centrifuge tube)	15.5 mm	Round bottom	95.5 x 76.5 x 50 mm
DT07	16 mm x 12(10ml/15ml Centrifuge tube)	16.5 mm	Round bottom	95.5 x 76.5 x 50 mm
DT08	19 mm x 12	19.5 mm	Round bottom	95.5 x 76.5 x 50 mm
DT09	20 mm x 6	20.5 mm	Round bottom	95.5 x 76.5 x 50 mm
DT10	26 mm x 6	26.5 mm	Round bottom	95.5 x 76.5 x 50 mm
DT11	28 mm x 4(50ml Centrifuge tube)	28.5 mm	Flat bottom	95.5 x 76.5 x 50 mm
DT12	40 mm x 2	40.5 mm	Round bottom	95.5 x 76.5 x 50 mm
DT13	0.5 ml x 42	8 mm	Cone bottom	95.5 x 76.5 x 50 mm
DT14	1.5 ml x 24	10.8 mm	Cone bottom	95.5 x 76.5 x 50 mm
DT15	2.0 ml x 24	10.8 mm	Round bottom	95.5 x 76.5 x 50 mm
DT16	0.2 ml x 48	6.1 mm	Cone bottom	95.5 x 76.5 x 50 mm
DT17	0.2 ml x 96	6.7 mm	Cone bottom	95.5 x 153.5 x 33.5 mm
DT18	Flat bottom plates	Top size 76 x 116 x 4 mm	Flat plate block	95.5 x 153.5 x 22.5 mm
DT19	Customized	Customized	Customized	Customized